



Smart XVR Kits

Quick Start Guide

Please read the Quick Operation Guide carefully before using the product and keep it.

Related tools and documents of products, please download from www.herospeed.net.

Stetement

Thank you for purchasing our products, if you have any questions or requires, please contact us. This manual is applicable to Smart XVR Kits (XVR and PIR sensor cameras, sound alarm cameras, and gas detection cameras).

The manual contents will be updated according to the upgrade or change of the product function. The updated contents will be added in the new version of this manual without prior notice. Please forgive if bring you any inconvenience. If there is a description of the product and the physical does not match, shall prevail in kind.

Safety Precautions

1. After the equipment is arranged, please timely modify the default user password to prevent theft.
2. Please do not place the equipment and installed in direct sunlight or near the heating equipment.
3. Please do not install the equipment in a wet, dusty or soot place.
4. This equipment should be kept horizontal during installation and avoid installing in locations subject to excessive vibration. Pay attention to prevent the product fall.
5. Do not drop or splash the liquid on the equipment, and ensure that the equipment can not be placed on the liquid filled items to prevent the flow of liquid into the device.
6. Please install in a well-ventilated place, do not plug the ventilation of the device.
7. Please use the equipment in the rated input and output range.
8. Please do not arbitrarily disassemble the equipment.
9. Please transport, use and store the equipment in the permissible humidity and temperature range.

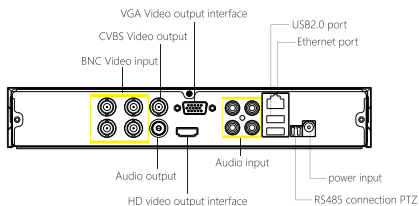
Disclaimer

The following responsibilities are exempt or restricted, please pay special attention to:

1. Our Company shall not be liable to you or any person for personal injury or property damage for any of the following reasons, and shall not responsible for the incorrect installation or use not in accordance with the requirements ; for the purpose of safeguarding the State or the public interest; force majeure; Your own or third party reasons (including but not limited to the use of third party products, software or components and other issues).
2. Our company has not been in any express or implied way to ensure that this product is suitable for special purpose or use, this product shall not be used for medical / safety equipment or other product failure may lead to life-threatening or personal injury applications and mass destruction Weapons, biological and chemical weapons, nuclear explosions or any unsafe use of nuclear energy and other dangerous or contrary to humanitarian use. Any loss or liability arising from such use will be at your own expense.
3. Products under the correct installation and use can be aware of a specific occurrence of illegal intrusion, but can not avoid the accident or the resulting personal injury or property damage. In daily life please be vigilant and strengthen your awareness of safety.
4. The Company is not responsible for any indirect, incidental, special or punitive damages, requests, loss of property or loss of any data or documents. To the maximum extent permitted by law, our liability does not exceed the amount paid by you when you purchase this product.

Product Rear Panel Description

XVR rear panel interface description: BNC Video input, CVBS Video output, Audio output, VGA Video output interface, HD video output interface, Audio input, Ethernet port, USB2.0 port, RS485 connection PTZ, power input, as below:



Notes: Image for instruction use only, the final goods are subjected to the real object.

XVR Kits Quick Operation Guide

XVR package installations plug and play, no need to set.

Start the installation guide step into:

Step 1: Installation Preparation

Install XVR hard drive. Before installation, make sure that the power is turned off.

Installation tools: Cross screwdriver (please use the device manufacturer recommended XVR dedicated monitoring hard drive)



(1) Loosen the screws that secure the sides and back of the cover and remove the cover.

(2) Plug in the hard drive cable and power cable.



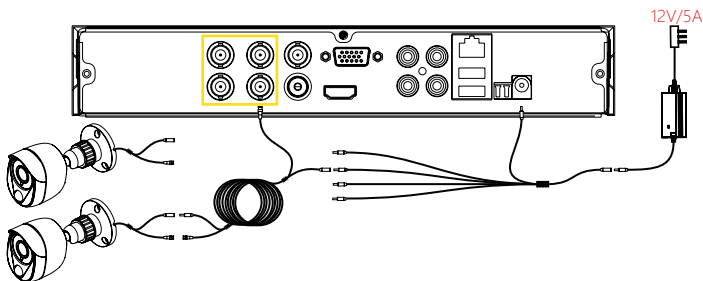
(3) Align the screw holes on the hard disk with the screw holes on the base plate and tighten the hard disk to the bottom with screws.

(4) Align the cover against the base and gently close it. Tighten the top .

Notes: The picture is for reference only, the final product to prevail in kind

Step 2: Device Connection

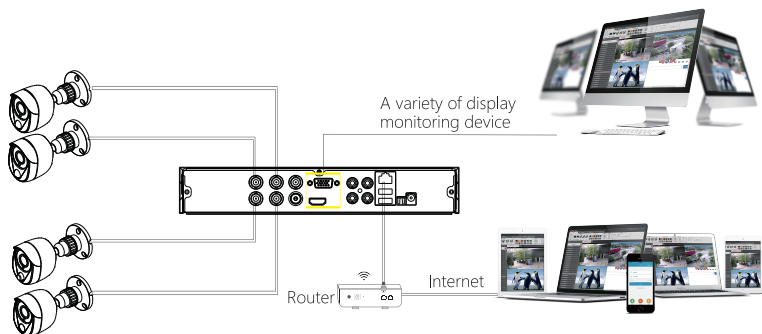
Use the 5ch power cable splitter to connect with the power supply, and another end connect with XVR recorder and the HD camera power supply. XVR recorder will preview the screen via the BNC cable. default (XVR address: //192.168.1.88), the connect way as below:



Notes: Images for instruction use only, the final goods are applied to the real object.

Confirm XVR kit is OK: Connected the XVR with the display, HD camera access XVR via the BNC, XVR and the camera plug in the power supply, without any operation, because it has been configured successfully before the factory, when the display appears on the analog camera video, Normal.

Note: The product configuration power adapter voltage is 12V, please ensure that the power supply (100V ~ 240V) normal, not below or above the power supply range, otherwise it will seriously damage the XVR package equipment.

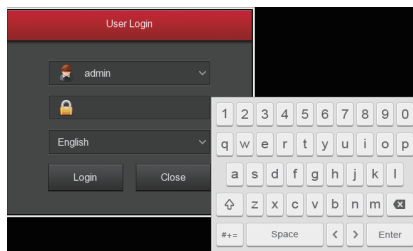


Notes: The picture is for reference only, the final product to prevail in kind

System Login

Start up the XVR, right click the desktop and enter the user login interface. Input the user name and password, click " Login ".

System default user name : "admin" password : "12345".



Preview

Enter preview interface after device start up. Preview interface include date and time of system, and channel name. Login system, double left click to switch between full screen and multi-screen.

Menu Basic Operation Instructions

1) Enter menu mode

Login system, right click to popup shortcut menu.

Left click [menu], enter the main menu interface.

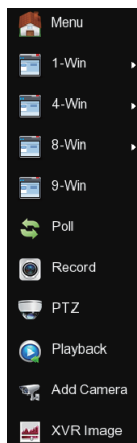
Left click [playback], enter playback operation interface.

Left click [record setup], enter record setting operation interface.

2) Exit menu mode

Right click to exit menu mode.

In the menu mode, right click to return to the previous menu (also for other menus).



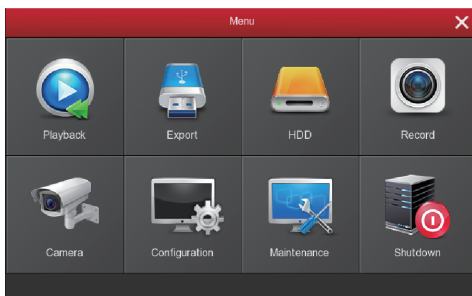
Shortcut Menu Introduction

Click the right mouse button pop-up shortcut menu, shortcut menu consists of the following three parts:

Preview mode: Select the preview mode in the menu bar you like.

Shortcut menu mode: in the menu bar wheel tour, video settings, add equipment, video playback, PTZ settings and NVR image color, you can directly enter the appropriate menu.

Main menu : Click to enter after the **【Playback】** , **【Export】** , **【HDD】** , **【Record】** , **【Camera】** , **【Configuration】** , **【Maintenance】** , **【Shutdown】** .

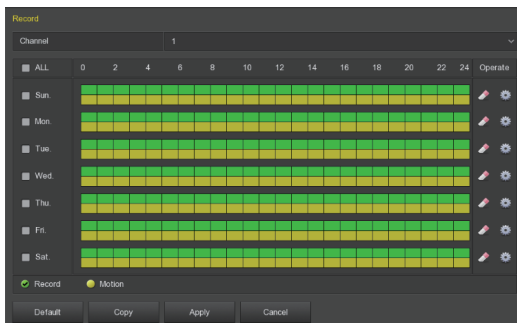


Record

- 1、HDD formatting, to ensure that the hard disk has been detected and work normally (you can check status of HDD from menu "HDD"->"General").
- 2、In the shortcut menu, click **【Record】** , enter the video settings interface, or in the main menu, click the left mouse button **【Record】** to enter the video settings interface, NVR default all time ordinary Video.

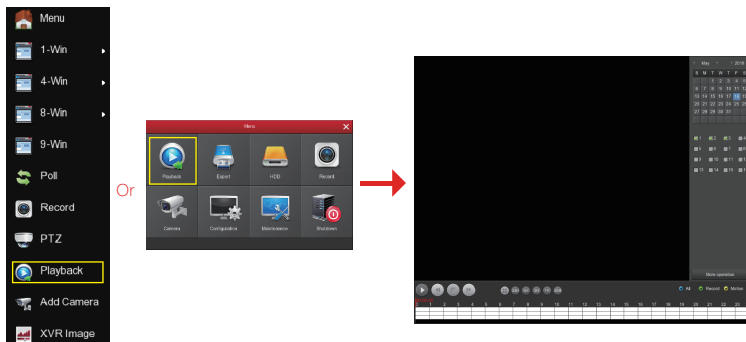


3、Motion Detection Setting. Enable "Motion" to activate motion recording, motion sections have no more than 6 times each day. If the setting of manual record and motion record are overlapped, it can only save the motion records while motion detection comes up.



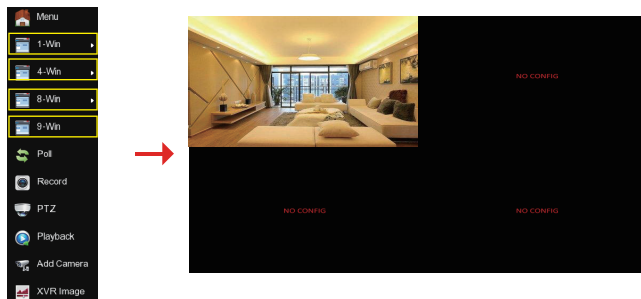
Playback

Enter "Playback" interface by clicking "Playback" from shortcut or main menu, select channels and search the record files and playback what you want.



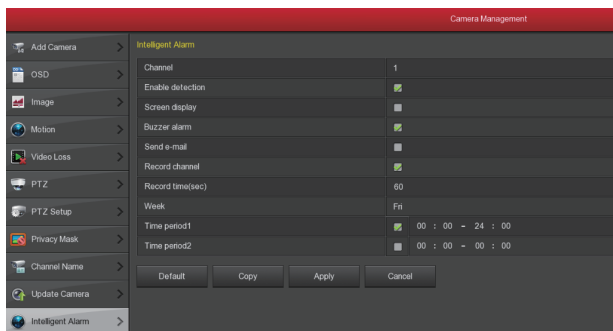
Live View

XVR kits default match cameras device, connect all the devices to XVR, power on, connect the monitor device, then can real time preview. Left click 【1-Win】 / 【4-Win】 / 【8-Win】 / 【9-Win】 in the menu, and enter real time view interface, can add one or more cameras monitor Win at the same time.



Intelligent Alarm

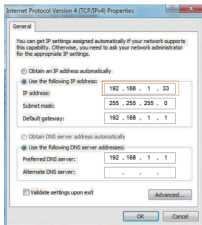
Right-click the shortcut menu in the XVR preview interface and click Main Menu→ Camera→ Intelligent Alarm to enter the alarm setting interface; select the channel with PIR sensor camera or gas detection camera, check the " Enable detection " to set the corresponding alarm For example, "Screen display", "Buzzer alarm", "Send e-mail", "Record channel", etc., click "Apply". Select the channel with sound alarm camera, click "Enable detection", and click "Apply". When a PIR sensor camera or a gas detection camera triggers an alarm, the XVR makes a corresponding alarm and the sound alarm camera sounds an alarm.



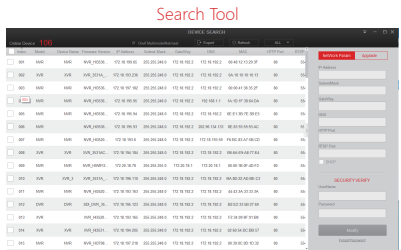
Webpage XVR Login

Login XVR LAN(Same router in same computer, also named intranet)

- ① Connect PC with LAN of XVR with internet, confirm XVR and computer with the same network segment. If computer do not have the network segment, need add one same network segment with XVR. For example: '192.168.1.33'(Note: XVR default IP address is 192.168.1.88).
- ② Open IE browser, choose Tool- internet item-safe-default level-ActiveX Controls and plug-ins, All choose start using.
- ③ Search XVR or open IE Browser input XVR address Trought Search Tool: for example http://192.168.1.88(if XVR port 80 change to be other, need add the new port)
- ④ Login XVR: Input the user and the password, click "Login". Default User: "**admin**", password: "**12345**".
- ⑤ Preview XVR through PC: Click player button in the bottom interface of 'LiveVideo'.

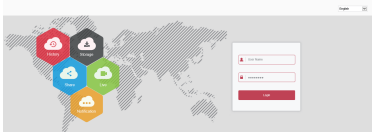


①



③

(First connect need download and install plugin)



④



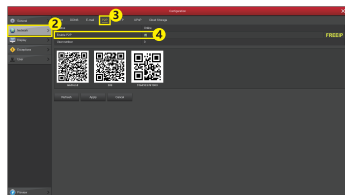
⑤-1



⑤-2

P2P Access XVR

1. When you make sure the XVR already connect the network, enter the main menu 【Configuration】
- 【Network】 setting, enter "P2P"; click "Start P2P" until it show "Online".
2. Type <http://www.freeip.com/> in the browser that the network can work in outer net, login account-configuration management-quickly adding device(type the device serial number(XVR main menu-network-P2P interface can check the XVR serial number)), user name(admin), password(12345)
-My FREEIP-choose adding device, preview real time videos(Remark: The first time log in the web need to download the OCX first, then you can view the videos).



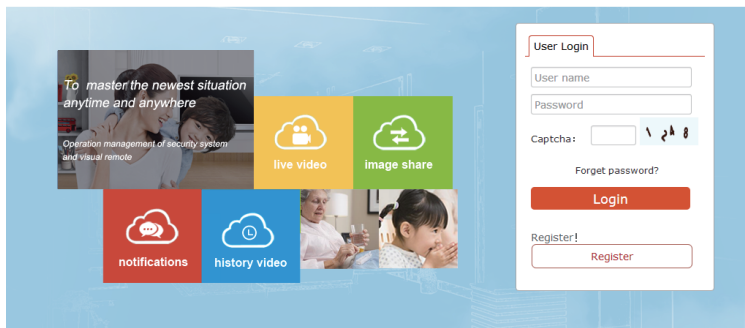
Enter 【Configuration】 setting in the main menu.

Chose 【Network】 in the 【Configuration】 , enter "P2P"-click "Start P2P"-Show "On line".



Freeip

Language : English ▾



Mobile App Access XVR

Download and install FreeIP on your smart phone by following way:

- (1) In the Android phone Google App Store or iphone App Store enter "FreeIP" search,download and install.
- (2) Search the following QR codes to download and install the App.
- (3) Download from the following websites.

Android App :

<https://play.google.com/store/apps/details?id=com.xc.hdscreen>



Android App

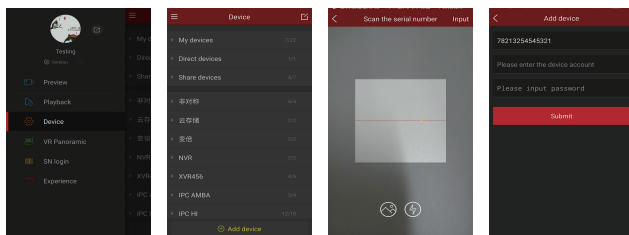
iOS App :

<https://itunes.apple.com/cn/app/freeip/id898690336?mt=8>



iOS App

Open the FreeIP app(New users please register an account),follow up the following steps to add the devices.

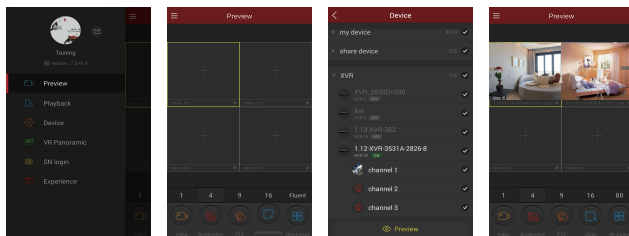


①

②

③

④



⑤

⑥

⑦

⑧

- ① Click **【Device】** to add the device.
- ② Click the bottom of the interface **【+Add device】** ,select "The serial number to add"into the QR code scanning interface.
- ③ Scan the QR code printed on the device sticker or posted on the webpage to add the device.
- ④ Enter the user name, password and verification code according to the app prompt, verification code is on the random delivery box, click **【Submit】** , set device name, select group, click **【Add】** .
- ⑤ Click **【Preview】** in the sliding menu.
- ⑥ Click **【+】** to enter **【Device】** interface.
- ⑦ In **【Device】** ,please choose the device you want to preview,then click **【Preview】** .
- ⑧ You can choose different definitions in the preview interface.

Note: App automatically determines whether the device has a verification code. If the app has a verification code field when adding the device, you need to find the verification code on the label of the device body or the outer box and enter it.